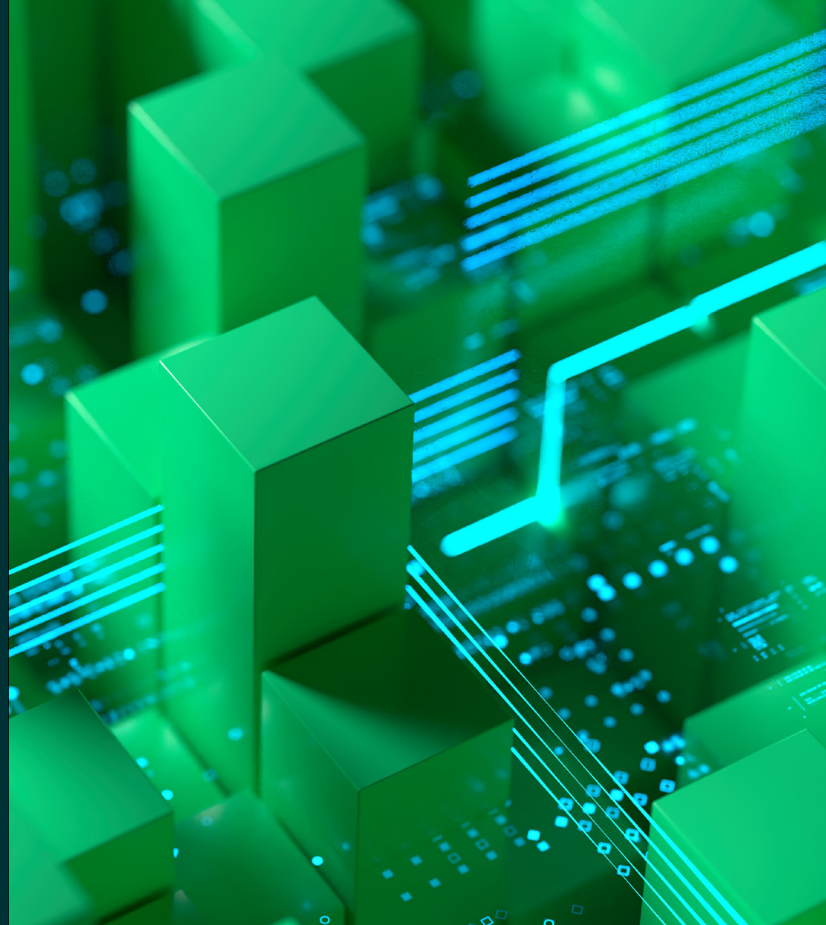


Streamline devices, endpoints and migrations

Unisys Unified Endpoint Management



Highlights

Cloud-based controls to manage OS transitions like Windows 11

Admin console for full visibility of all endpoints, whether traditional, mobile or virtual

Advanced analytics and reporting for streamlined processes

Fast, reliable access to corporate services and resources, regardless of employee location

Stress-free device migration when changing Unified Endpoint Management (UEM) solutions

Scalable deployments from 1,000 to 100,000 devices, with wave rollouts

Advanced threat protection, hard disk drive (HDD) encryption and AI

Intuitive admin control for real-time migration tracking

Workforce productivity is closely tied to employee devices — and with the rise of hybrid work, the number, variety and complexity of those devices are growing. Standard tools and processes must efficiently deliver a positive, secure experience across devices and apps.

Organizations are under enormous pressure to provide secure access to corporate resources and applications anytime, anywhere and on any device. Teams employing Unisys Unified Endpoint Management can scale migrations from 1,000 to 100,000 devices and smoothly manage Windows 11 and other OS transitions. Our intuitive approach helps track and validate each step, reducing IT workload while keeping users productive and secure.

Migrate your Windows

Minimize disruption, maximize security and deliver a modern workplace experience your employees will love.



With your fleet of devices fully protected, your employees can do their jobs in ways that fit their role requirements and work patterns. Deliver an employee experience that is seamless and consistent across all devices and locations, increasing satisfaction and boosting workforce productivity.

How you benefit

- **Centralized management:** Manage devices and applications from onboarding to retirement, on-premises or in the cloud, from one UEM solution. Customized dashboards, control mechanisms, policies and protocols enable you to provision, update, migrate, block and monitor all devices.
- **Faster resolution:** Gain complete visibility of all devices through the admin console. Dashboards provide advanced analytics and reporting capabilities, letting you monitor device usage and detect patterns, recurring issues and requests.
- **Advanced threat protection:** Deploy, manage and monitor antivirus agents and HDD encryption across endpoints to increase data security. Use AI-powered behavioral analysis and crowdsourced threat intelligence to identify and remediate security issues in real time.
- **Reduced cost:** Reduce operational expenses, freeing your top talent to focus on strategic projects.
- **Simplified migration:** Seamlessly migrate devices with an admin console to track users and device migration status, a wave approach to implementation and an end-user agent application for visibility.
- **Increased visibility:** Check a user's battery life, ensure Wi-Fi connectivity and receive status updates until the migration process is complete. This end-user agent application tracks devices through the entire process, preventing devices from going missing when unenrolled.



Streamlined migration process

Walk users through the migration process in minutes with the end-user agent application, compared to the hours often required for manual migration.

Why Unisys?

With deep expertise in managing enterprise device transitions globally, Unisys bridges the gap between legacy systems and modern platforms — giving you complete control while minimizing migration time and effort.

Our comprehensive solution combines innovative migration technology with extensive experience in enterprise IT transformations. Whether you're transitioning on-premises or software as a service (SaaS) UEM tenants, our global team supports migrations across multiple time zones and regions for Android, iOS and macOS devices.

The Unisys advantage delivers consistent, secure and efficient UEM for device fleets of any size, with full support for iOS Automated Device Enrollment and Android Enterprise. Let us handle the complexity while you focus on moving your business forward.

To learn how Unisys can streamline your UEM migration, visit us [online](#) or [contact us](#) today.



[unisys.com](https://www.unisys.com)

© 2025 Unisys Corporation. All rights reserved.

Unisys and other Unisys product and service names mentioned herein, as well as their respective logos, are trademarks or registered trademarks of Unisys Corporation. All other trademarks referenced herein are the property of their respective owners.